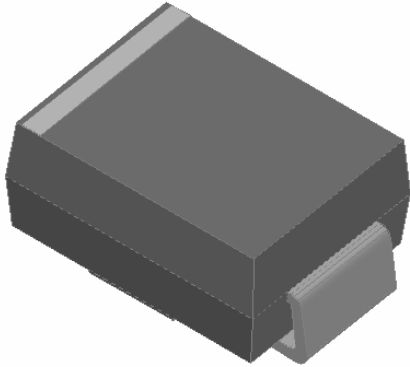


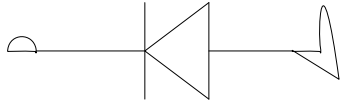


G i fZUWY' A c i b h' <] [ \ '9ZZ]W]Ybh' FYWh]Z]Yf'



..... : YU h i fYg''''

- Low profile package
- Ideal for automated placement
- Glass passivated chip junction
- High forward surge capability
- Super fast reverse recovery time
- Meets MSL level 1, per J-STD-020, LF maximum peak



.. 'AYW\UbjWU' '8U hU'

- DUW\_U[Y: DO-214AA (SMB)
- Molding compound meets UL 94 V-0 flammability rating, RoHS-compliant, halogen-free
- HYf a]bU'g': Tin plated leads, solderable per J-STD-002 and JESD22-B102
- Dc'Uf]hm.' Cathode line denotes the cathode end

AU]a i a'FUh]b]g (T<sub>a</sub>=25 Unless otherwise specified

D5F5A9H9F'	GMA6C@'	I B:H	<G&5	<G&6	<G&8	<G&:	<G&;'	<G&>'	<G&?'	<G&A
Device marking code			HS2A	HS2B	HS2D	HS2F	HS2G	HS2J	HS2K	HS2M
Maximum Repetitive Peak Reverse Voltage	V <sub>RRM</sub>	V	50	100	200	300	400	600	800	1000
Maximum RMS Voltage	V <sub>RMS</sub>	V	35	70	140	210	280	420	560	700
Maximum DC blocking Voltage	V <sub>DC</sub>	V	50	100	200	300	400	600	800	1000
Forward Surge Current (Non-repetitive) @60Hz Half-sine wave, 1 cycle, T <sub>j</sub> =25	I <sub>FSM</sub>	A	50							
Forward Surge Current (Non-repetitive) @1ms, square wave, 1 cycle, T <sub>j</sub> =25			100							
Current squared time @1ms t 8.3ms T <sub>j</sub> =25	I <sup>2</sup> t	A <sup>2</sup> s	10.375							
Storage temperature	T <sub>stg</sub>		-55 ~ +150							
Junction temperature	T <sub>j</sub>		-55 ~ +150							





.....

trr

0

Example

DF9:9F98'D#B	D57?:B ; 7C89	IB=H' K9=; <Hfl[Ł	A=B-A I A D57?5 ; 9fidWgt	=BB9F'6CL E I 5BH=HMfidWgt	C I H9F'75FHCB E I 5BH=HMfidWgt	89@=J9FM AC89
<G&5!<G&A	F1	Approximate 0.096	3000	/	48000	13" reel
<G&5!<G&A	F2	Approximate 0.096	750	6000	24000	7" reel
<G&5!<G&A	F3	Approximate 0.096	500	4000	16000	7" reel

'<G&5'H<F I'<G&A'



8]gW'U]a Yf'

The information presented in this document is for reference only. Yangzhou Yangjie Electronic Technology Co., Ltd. reserves the right to make changes without notice for the specification of the products displayed herein to improve reliability, function or design or otherwise.

The product listed herein is designed to be used with ordinary electronic equipment or devices, and not designed to be used with equipment or devices which require high level of reliability and the malfunction of which would directly endanger human life (such as medical instruments, transportation equipment, aerospace machinery, nuclear-reactor controllers, fuel controllers and other safety devices), Yangjie or anyone on its behalf, assumes no responsibility or liability for any damages resulting from such improper use of sale.

This publication supersedes & replaces all information previously supplied. For additional information, please visit our website [http:// www.21yangjie.com](http://www.21yangjie.com) , or consult your nearest Yangjie's sales office for further assistance.